

2023 VISITOR'S MAGAZINE
APRIL - JUNE

LAKE ELSINORE VALLEY
CHAMBER OF COMMERCE

FREE
TO ENJOY!

DREAM EXTREME SPRING

**Legislative Report
Card** - Page 9

**Housing in
Lake Elsinore** - Page 12

Health Article - Page 24

**City of Lake Elsinore
DINING CHOICES** - Page 4

74TH ANNUAL

*Installation
&
Awards Ceremony*

SATURDAY

MAY

06

2023

6PM - 10PM

PINS N POCKETS
32250 MISSION TRAIL
LAKE ELSINORE

2023 EXECUTIVE BOARD

CHAIRWOMAN OF THE BOARD
MICHELE MUNOZ
*Farmers Insurance -
Munoz Insurance Agency*

FIRST VICE CHAIR
JEFF UPCRAFT
Southwest Healthcare System

SECOND VICE CHAIR
BONNIE WOODROME
*Elsinore Valley Municipal Water
District (EVMWD)*

THIRD VICE CHAIR
SHAUN BROCK
Lake Elsinore Storm

TREASURER
JACK FERGUSON
Jack T. Ferguson CPA

CORPORATE SECRETARY
ELIZABETH ROUSE
*Coldwell Banker Commercial
Sudweeks Group*

IMMEDIATE PAST CHAIR
MATTHEW DOBLER
Dream Center

2023 BOARD OF DIRECTORS

MIGUEL CASILLAS
El Comal Restaurant

JASON DEVOR
Hit Print

ADAM EVENTOV
So Cal Gas

JON FAVILLO
Jon's Movers Inc.

JEREMY GOLDMAN
Southern California Edison

JOVANNY HUERTA
City of Lake Elsinore

PARISA JEBELLI
CR&R Environmental Services

MYLES ROSS
Sunbelt Business Sales

GUY SELLECK
BuildersMax

ADVISORY BOARD

MIKE NORKIN
Cherished Memories Photography

2023 OPERATION STAFF

KIM JOSEPH COUSINS
President/ CEO

MALYNA RIVERA



Mayor Natasha Johnson
City of Lake Elsinore

A MESSAGE FROM OUR CHAIRWOMAN
LET'S TALK LAKE ELSINORE

Dear residents of Lake Elsinore,

As your Mayor, I am honored to provide you with an update on the Poppy Bloom and the measures we have implemented to ensure the preservation of our natural habitat and the safety of our community.

I am thrilled to report that the collaborative efforts of various stakeholders, including local authorities, environmentalists, and community members, have been highly influential in preserving the integrity of the natural habitat and safeguarding our residents from the chaos of the 2019 Super Bloom.

I want to sincerely thank everyone involved in making this happen. The collective efforts of every stakeholder have led to the successful implementation of these protocols.

We understand the importance of preserving our natural resources and are proud to say that the Poppy Bloom procedures have been a resounding success. Our city has maintained its natural habitat while ensuring our residents can enjoy their daily lives without interrupting the chaotic scenes we witnessed in the spring of 2019.

I want to remind everyone that Walker Canyon Trail, the parking entrance, and access from Lake Street remain closed until further notice. Parking restrictions are also in place, and signs have been posted in the surrounding areas to ensure compliance. Sheriff deputies, code enforcement officers, and park rangers will continue patrolling the area and issuing citations if necessary. Additionally, CHP will be actively patrolling the freeway for anyone stopping on the I-15 freeway.

To those interested in viewing the state of the poppies, we have launched a live video feed of Walker Canyon via the City of Lake Elsinore website. I encourage you to take advantage of this service and enjoy the beauty of our natural habitat from the comfort of your own home.

I want to thank you for your patience and understanding as we work to preserve the beauty of our natural habitat. Our collective responsibility is to protect our environment, and we are proud to say that we are making a difference.

Thank you for your continued support, and I look forward to updating you on our progress.

Sincerely,

Mayor Natasha Johnson, City of Lake Elsinore

Stay connected and up-to-date on what's happening in Lake Elsinore by following us on Facebook and Instagram @lakeelsinorechamber, or on Twitter @lakeelsinorechamber.

2023 AMBASSADOR TEAM:

PAUL AGUILAR
Pacific Lending LLC.

KARLEE NAULT
Jon's Movers

KIMBERLY PERKINS

MARILYN JONES
Simply Gorgeouz Party Supply & Planning

MATT NORKIN
Cherished Memories Photography

TANYA TAYLOR
Julia Lee Performing Arts Academy

RACHEL MENDEZ
Elsinore Public Relations

LAKE ELSINORE VALLEY CHAMBER OF COMMERCE

RESTAURANTS

OPEN FOR DINE IN, TAKE OUT OR TO GO ORDERS

AS EVENTS ARE CHANGING DAY TO DAY WE ENCOURAGE YOU TO CHECK OUR WEBSITE AND /OR CALL AHEAD TO THE RESTAURANTS TO MAKE SURE THEY ARE STILL PROVIDING THESE SERVICES!

ANNIE'S CAFÉ

(951) 245-6106 • 32251 Mission Trail #8
www.anniescafelakeelsinore.com
Mon-Sun 7:00am-1:30pm

FELIX'S BBQ WITH SOUL

(951) 609-2488 • 123 Main St
www.felixsbbq.com
Wed-Sun 11am-7pm

MIGUEL'S JR. RESTAURANTS

(951) 281-0888 • 18320 Collier Ave
M-Th 7am-10pm Fri 7am-10:30pm Sat 8am-10:30pm Sun 8am-10pm

BLOOM ICE CREAM + COFFEE

(951) 805-1337 • 159 N Main St Suite A
www.bloomicecreamcoffee.com
Monday 10am-9pm Tue-Sun 7AM-9pm

GOLDEN CORRAL

(951) 609-2452 • 18625 Dexter Ave
goldencorral.com
M-F 11am-9pm and Sat-Sun 8am-9pm

MY BUDDIES PIZZA

(951) 674-6946 • 2503 E Lakeshore Dr # A
Sun-Thurs 11am-9pm Fri-Sat 11am-10pm

CJ'S SPORTS GRILL & TURF CLUB

(951) 674-3101 • 20930 Malaga Rd
www.cjsbar.com
Sun-Thurs 8am-12am Fri-Sat 8am-2am

GUADALAJARA MEXICAN GRILL

(951) 674-8294 • 105 N Main St
www.guadalajaramexicangrill.com
M-Sun 11am-8pm

NEW LIFE CULINARY CREATIONS

www.newlifecatering.com
Check website for additional information

CRAFT BREWING & KITCHEN

(951) 674-2562 • 17600 Collier Ave
www.craftbrewingcompany.com
Mon 3-8pm Tue-Sat 11am-9pm Sun 11am-6pm

IHOP

(951) 674-4522 • 18248 Collier Ave
www.ihop.com
M-Sun 7am-6pm

PANERA BREAD

(951) 253-8062 • 18300 Collier Ave
www.locations.panerabread.com
M-Sat 6:30am-9:30pm Sun 7:30am-8:30pm

DIAMOND TAP ROOM

(951) 457-2469 • 500 Diamond Dr
diamondtaproom.com
Game Days: (open until game ends)
Opens at: T 4:30pm W 5:30pm Th 6PM F 5PM Sat 4pm Sun 2pm
Non-Game Days: Thurs-Fri 4pm-11pm Sat-Sun 11am-8pm

JERSEY MIKE'S SUBS

(951) 609-2522 • 31800 Grape Street #B
www.jerseymikes.com.com
M-Sun 10am-9pm

POPEYES LOUISIANA KITCHEN

(951) 471-3343 • 29235 Central Ave
www.popeyes.com
M-Th 10am-10pm Fri-Sun 10am-11pm

DICKEY'S BARBECUE PIT

(951) 816-6546 • 29273 Central Ave. Suite B
www.orders.dickeys.com
Mon-Sun 11am-9pm

JERSEY MIKE'S SUBS

(951) 609-2051 • 18492 Dexter Ave
www.jerseymikes.com/20349/lake-elsinore-ca
M-Sun 10am-9pm

RAISING CANE'S

(951) 373-4789 • 29250 Central Ave
www.raisingcanes.com/location/535
Sun-W 9am-1am Th-Sa 9am-2am

EL COMAL RESTAURANT

(951) 579-1759 • 31731 Riverside Dr
M-Sun 9am-8:30pm

LA UNICA COCINA MEXICANA Y CANTINA

(951) 674-2233 • 110 N Main St
www.launicarestaurant.com
M-Sun 11am-9pm

STADIUM PIZZA MAIN ST.

(951) 228-2128 • 169 N Main St
www.stadiumpizza.com
Sun-Th 10:30am-8:00pm Fri-Sat 10:30am-9pm

MAIN STREET KITCHEN & TAP

(951) 674-6777 • 157 N Main St
T-Th 11AM-8PM Fri-Sat 11am-9pm Sun 11am-8pm

THE LOOKOUT ROADHOUSE

(951) 678-9010 • 32107 Ortega Hwy
lookoutroadhouse.com
Sat-Sun 8am-4pm

EL RANCHITO TACO SHOP

(951) 245-1438 • 32251 Mission Trail
M-Sun 8am-9pm

MICHI TACOS

(951) 285-5553 • 111 N. Main St.
M-Th 11am-9pm Fri 11am-10pm Sat 10am-10pm Sun 10am-9pm

VINCENZO'S OLIVE TREE

(951) 674-8941 • 31712 Casino Dr # 3B
www.vincenzosolivetree.com
M-F 11am-9pm and Sat-Sun 12:00pm-9pm

DINE LOCAL TO SUPPORT OUR COMMUNITY!



MUNCH & LEARN
 VIA ZOOM - FOR MORE INFORMATION
 PLEASE CALL LAKE ELSINORE VALLEY CHAMBER OF COMMERCE
 AT (951) 245-8848

MAY 3RD : - TOPIC: BRANDING BASICS
 PRESENTED BY DARCY BURKE OF WATERMARK ASSOCIATES



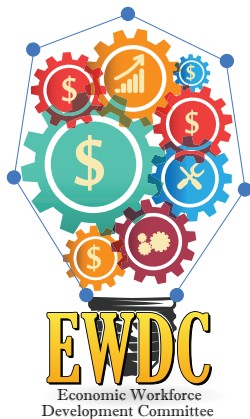
UPCOMING DATES:

APRIL 12TH SPONSORED BY NEXT YOUNG PROFESSIONALS
 MAY 10TH SPONSORED BY ELSINORE VALLEY MUNICIPAL WATER DISTRICT (EVMWD)
 JUNE 14TH SPONSORED BY LAKE ELSINORE FORD

FROM: 8:00 A.M. - 9:30 A.M.



LAKE ELSINORE CASINO RESTAURANT | 20930 MALAGA RD. • LAKE ELSINORE, CA 92530



LUNCHEON FROM 11:30 AM TO 1:00 PM

DIAMOND TAPROOM - 500 DIAMOND DR.

The price of the luncheon is \$20 per person for LEVCC members or \$25 per person for Non-Members for non-members, payable at the door by cash or check. **Reservations are Required.** Please RSVP by noon on the **Monday** before the luncheon, by calling (951) 245-8848 or via e-mail at malyna@lakeelsinorechamber.com. No-shows will be billed. If you prefer to receive invitations via e-mail, please forward your e-mail address to info@lakeelsinorechamber.com.

May 18th - "Economic Update for Southwest CA"
 Presented By: Adam A. Ruiz of
 Southwest Riverside County Association of REALTORS (SRCAR)

Diamond Taproom - \$20 for Members - \$25 for Non-Members



AFTERHOURS
 BUSINESS MIXER 5:30 PM - 7:00 PM

- Network with Other Business Owners
- Find Out About Chamber Membership
- Food and Refreshments Provided
- Come Promote Your Business by Bringing a Raffle Item

For More Information or To Sign Your Business
 Up To Host an "Afterhours Business Mixer"
 Please Call Lake Elsinore Valley Chamber of Commerce
 at (951) 245-8848



MAY 18TH:
 LOCATED AT PINS N' POCKETS TAVERN



BuildersMax truly believes in Lake Elsinore's Dream Extreme Mantra. BuildersMax is developing a Business EcoSystem that will assist local small businesses with a suitable location to develop and thrive.

Our Rome Hill Project

BuildersMax will develop and build our new National Headquarters in Lake Elsinore. This project will provide 250 jobs.

Community Engagement

Guy Selleck, Founder and CEO:

Board member of the Lake Elsinore Chamber of Commerce

Michael Carroll, Director Business Development:

Seated Multi- Term Lake Elsinore Planning Commissioner



STORM BASEBALL

MINOR LEAGUE AFFILIATE OF THE SAN DIEGO PADRES



*Your
Home Team!*

STORMBASEBALL.COM



/LAKEELSINORESTORM



@STORM_BASEBALL

APRIL

SUN	MON	TUE	WED	THU	FRI	SAT
				VIS ⁴	VIS ⁷	VIS ⁸
OFF ⁹	OFF ¹⁰	IE ¹¹	IE ¹²	IE ¹³	IE ¹⁴	IE ¹⁵
IE ¹⁶	OFF ¹⁷	MOD ¹⁸	MOD ¹⁹	MOD ²⁰	MOD ²¹	MOD ²²
MOD ²³	OFF ²⁴	VIS ²⁵	VIS ²⁶	VIS ²⁷	VIS ²⁸	VIS ²⁹
VIS ³⁰						

MAY

SUN	MON	TUE	WED	THU	FRI	SAT
	OFF ¹	RC ²	RC ³	RC ⁴	RC ⁵	RC ⁶
RC ⁷	OFF ⁸	SJ ⁹	SJ ¹⁰	SJ ¹¹	SJ ¹²	SJ ¹³
SJ ¹⁴	OFF ¹⁵	IE ¹⁶	IE ¹⁷	IE ¹⁸	IE ¹⁹	IE ²⁰
IE ²¹	OFF ²²	RC ²³	RC ²⁴	RC ²⁵	RC ²⁶	RC ²⁷
RC ²⁸	OFF ²⁹	VIS ³⁰	VIS ³¹			

JUNE

SUN	MON	TUE	WED	THU	FRI	SAT
				VIS ¹	VIS ²	VIS ³
VIS ⁴	OFF ⁵	FRE ⁶	FRE ⁷	FRE ⁸	FRE ⁹	FRE ¹⁰
FRE ¹¹	OFF ¹²	STK ¹³	STK ¹⁴	STK ¹⁵	STK ¹⁶	STK ¹⁷
STK ¹⁸	OFF ¹⁹	RC ²⁰	RC ²¹	RC ²²	RC ²³	RC ²⁴
RC ²⁵	OFF ²⁶	IE ²⁷	IE ²⁸	IE ²⁹	IE ³⁰	

JULY

SUN	MON	TUE	WED	THU	FRI	SAT
						IE ¹
IE ²	OFF ³	VIS ⁴	VIS ⁵	VIS ⁶	VIS ⁷	VIS ⁸
VIS ⁹	OFF ¹⁰	OFF ¹¹	OFF ¹²	OFF ¹³	FRE ¹⁴	FRE ¹⁵
FRE ¹⁶	OFF ¹⁷	RC ¹⁸	RC ¹⁹	RC ²⁰	RC ²¹	RC ²²
RC ²³	OFF ²⁴	STK ²⁵	STK ²⁶	STK ²⁷	STK ²⁸	STK ²⁹
STK ³⁰	OFF ³¹					

AUGUST

SUN	MON	TUE	WED	THU	FRI	SAT
		MOD ¹	MOD ²	MOD ³	MOD ⁴	MOD ⁵
MOD ⁶	OFF ⁷	VIS ⁸	VIS ⁹	VIS ¹⁰	VIS ¹¹	VIS ¹²
VIS ¹³	OFF ¹⁴	IE ¹⁵	IE ¹⁶	IE ¹⁷	IE ¹⁸	IE ¹⁹
IE ²⁰	OFF ²¹	RC ²²	RC ²³	RC ²⁴	RC ²⁵	RC ²⁶
RC ²⁷	OFF ²⁸	SJ ²⁹	SJ ³⁰	SJ ³¹		

SEPT

SUN	MON	TUE	WED	THU	FRI	SAT
					SJ ¹	SJ ²
SJ ³	OFF ⁴	IE ⁵	IE ⁶	IE ⁷	IE ⁸	IE ⁹
IE ¹⁰						

HOME AWAY

DATES & TIMES ARE SUBJECT TO CHANGE

CHAMBER MAGAZINE AD PRICING

The Lake Elsinore Valley Chamber of Commerce Magazine is a Quartly Publication that includes up-to-date Membership Directory, upcoming Chamber Events, City Map and Ad's for Chamber Members.

Advertising in the Magazine is an easy and effective way to reach 2500 people at a reasonable price!

FULL COLOR AD'S

BACK COVER	\$1000	1/2 PAGE	\$300
INSIDE FRONT COVER	\$600	1/4 PAGE	\$150
INSIDE BACK COVER	\$600	BUSINESS CARD	\$100
FULL PAGE	\$400		

Call the Chamber Today to Secure Your Ad Space in our Next Magazine.



951.245.8848

Don't have an Ad? No Problem!
The advertising price includes ad design.
Don't Miss Out On This Great Deal!!!



Fire



Water



Storm Disaster



- 24/7 emergency service
- Commercial and residential
- Emergency water extraction
- Trained, uniformed professionals
- Restore vs. replace
- Insurance company restoration vendor

SERVPRO® of Lake Elsinore/Perris

951-674-4006

servprolakeelsinore.com

Independently owned and operated

Like it never even happened.®

Lake Elsinore Historical Society

Visit our Museum located in
Historical Downtown Lake Elsinore

Come see our extensive collection of artifacts and research materials from Lake Elsinore's more than 125 years of history.

Main Street Museum
183 North Main Street
(Use Heald Avenue Entrance)

Hours:

Wednesday & Saturday 11:00 a.m. to 3:00 p.m.

Sunday 1:00 to 4:00 p.m.



Mailing Address: P.O. Box 84, Lake Elsinore, CA 92531-0084
Museum Information: 951/678-1537



LEGISLATIVE UPDATE

SWCLC Southwest California Legislative Council

We're into the first part of 2023 with a lot of bills- 2,632 bills were introduced by the Feb 17th deadline for legislation in Sacramento, the most in over 10 years- 1,751 in the Assembly and 881 in the Senate. This compares to a total of 2,518 bills introduced in last year's session. About 40% of them are still spot bills, or bills that are missing content that will be filled in later- as things evolve during the legislative cycle.

Southwest California Legislative Council has taken positions in the special session, opposing SBX1-2, the cap (tax) on refinery profits that would make transportation fuels even more expensive, and supporting ABX1-2, a 1-year suspension of the gas tax.

As you'd expect, we've also started to oppose other bad bills early so we can try and stop them- AB 627 changes the deadline to operate diesel-fueled heavy trucks on city or county roads, specifically in San Bernardino and Riverside Counties. This bill moves the goalposts, already set for 2045 and 2035, making it harder for operators to amortize costs and transition. We've also opposed SB 525, which would raise the minimum wage of healthcare workers (including support and main-

tenance staff) to \$25/hr., and opposed SB 626 that would change required sick leave for CA businesses from 3 to 7 days.

SWCLC has made an effort to support a few of our local legislators bills early. We support Asm. Sanchez's AB 306, the creation of a one-stop shop online for Small Business through the office of the Small Business Advocate. We've also supported Senator Seyarto's SB 73 that creates a program that allows private employers to maintain a veterans preference policy. And SWCLC voted to support Senator Roth's SB 75 to expand the number of judges on the bench in CA, many of whom would be assigned to Riverside and reduce the growing backlog of the justice system.

We're seeing a few items from 2022 come back already this year- SWCLC has already voted to oppose AB 1228, one of the provisions taken out of AB 257 (the fast food wage and HR bill from last year) before it passed. This bill would share liability between franchisors and franchisees, taking away

franchisee independence. We're also watching as the ghost of AB 2840 will return this year, a 1000 ft setback for new warehouse construction that would stop the Inland Empire's ability to expand its logistics infrastructure. This bill is a spot bill still that does not have published language, but we've heard it is coming and are ready to bring this to the Council to push back as soon as we get more information.

There are also a few updates on policies from last year- both AB 257 and SB 1137 had referendum processes initiated and signatures to overturn them gathered by industry groups. Both referenda verified enough signatures to qualify for the ballot, meaning both the new council to decide fast-food wages and HR decisions and an oil and gas well setback of 3200 ft. are on hold until voters decide in the November 2024 election.

As always, we invite you to attend the Southwest California Legislative Council meetings, now back to in-person meeting the 3rd Monday of every month at the Southwest California Association of Realtors offices in Murrieta. Contact your local Chamber of Commerce for more information.



ELM GROVE BEACH



500 LAKESHORE DRIVE, LAKE ELSINORE, CA 92530



AMENITIES

- FREE PARKING
- SHADE STRUCTURES
- PICNIC TABLES
- BARBEQUES
- FIRE RINGS (SUMMER SEASON)
 - FIRST COME FIRST SERVE
- VOLLEYBALL COURTS

REGULATIONS:

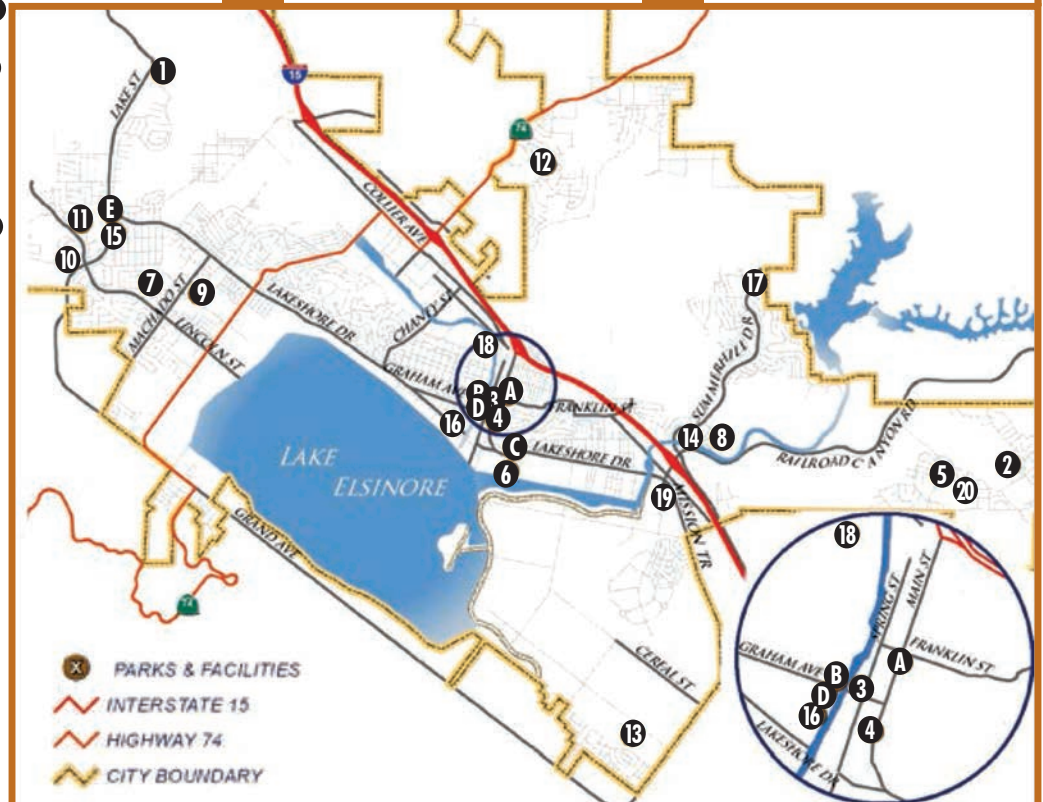
- HOURS: 6 AM TO 10 PM
- DOGS ARE PERMITTED ON A LEASH
- GLASS BOTTLES ARE NOT PERMITTED
- ALCOHOL IS NOT PERMITTED

FOR MORE INFORMATION VISIT WWW.LAKE-ELSNORE.ORG

CITY OF LAKE ELSINORE PARKS & FACILITIES

Restrooms		1 3 4 5 6 9 10 12 13 14 15 16 17 18 19 20 A B C D E
Concession		1 3 4 5 6 10 12 16 17 19
Parking		1 3 4 5 6 9 10 12 13 14 15 16 17 18 19 20 C D E
Picnic Areas		1 3 4 5 6 7 9 10 11 12 13 14 15 16 17 18 19 20 A D
Drinking Fountain		1 3 4 5 6 7 9 10 12 13 14 15 16 17 18 19 A B C D
Play Equipment		1 3 4 5 6 7 9 10 12 13 14 15 17 18 19 20 A
Spotlights		1 3 4 5 6 12 15 16 17 19 A
Picnic Shelters		1 3 4 9 10 12 13 19
Barbeques		1 3 4 5 9 10 12 14 15 18 19 20
Baseball		3 10 12 16 17 19 20
Football/Soccer		1 3 5 6 12 14 15 17 18 19 A
Basketball		1 3 4 7 12 13 19 20 C
Dog Park		3 10 12 13 19
Volleyball		6 9 C
Tennis		5 9 12 13 19
Horseshoe Court		4 D
Splash Pad		3 18
Community Center		C D
Gym/Auditorium		B C D
Multi-Purpose Room		1 A C D
Skate Park		10 13 19
BMX Park		13

1	Alberhill Park 28200 Lake Street	14	Summerhill Park 31613 Canyon Estates Drive
2	Channel Walk Heald Avenue and Spring Street	15	Summerlake Park 900 W. Broadway
3	Canyon Hills Community Park 34360 Canyon Hills Road	16	Swick & Match Park 402 Limited Street
4	City Park 243 S. Main Street	17	Tuscany Hills Park 30 Summerhill Drive
5	Creekside Park 3200 Lost Road	18	Yarborough Park 419 N Poe Street
6	Lakepoint Park 420 E. Lakeshore Drive	19	Summerly Community Park 18505 Malaga Road
7	Lincoln Street Park 14986 Lincoln Avenue	20	Christensen Park 36300 Piedmont Dr
8	Linear Park 31717 Canyon Estates Drive	A	Boys & Girls Clubhouse Alberhill Park 3711 Nichols Rd
9	Machado Park 15150 Joy Street	B	Cultural Center 183 North Main Street
10	McVicker Canyon Park & Skate Park 29355 Grand Avenue	C	Lake Community Center 310 W Graham Ave
11	Oak Tree Park 15340 Lincoln Street	D	Lake Elsinore Senior Activity Center 420 E Lakeshore Dr
12	Rosetta Canyon Sports Park 39423 Ardenwood Way	E	Youth Opportunity Center 400 W. Graham Avenue
13	Serenity Park & Skate BMX Park 19685 Palomar Road		





THE LAKE ELSINORE HOUSING JOURNAL

ADAM A. RUIZ FOR THE SOUTHWEST RIVERSIDE COUNTY ASSOCIATION OF REALTORS®

Welcome to another edition of the REALTOR® Report! I can't believe we're already in February. There has been a lot of talk about the housing market recently, including social media and news sources. Interest rates have declined, and housing prices are softening as a result of a less competitive market. This helps improve affordability and is bringing some buyers back to the market. I've even been reading about multiple offers on a home coming back into play. Is this a reality or applicable to our region? Unfortunately, I'd have to say no. While some of those things are true, the data for our area still paint a different picture. However, I will remind you that my report covers the last closed month, which represents contracts that were signed potentially 2-3 months ago. So there is some lag time, and we may see some of the benefits I mentioned coming soon.

For now, let's take a closer look at the numbers for our region from January 2023.

The median home price in Southwest Riverside County dipped 2% from the previous month (\$545,000/\$558,000), is down 4% from a year ago (\$565,000), but was up 17.2% from 2 years ago (\$465,000). So even though there has been a recent decrease, if you purchased your home 2+ years ago, you are still seeing positive growth in your home's value. Unsold inventory remained at 4 months (6 months is considered a healthy market), and the median time on the market increased again from last month to 42 days. This is up from 13 days last year and significantly higher than 2 years ago when it was just 7 days. After a slight recovery last month, unit sales dipped 9% from the previous month and are down 46% from last year. Unsold inventory decreased again from the

previous month by 12% but is up from last year, with an increase of 36%. Median prices showed more decreases than increases throughout the region, with a total median price variance from -16.2% to 5.6%.

I know that's not the most uplifting news to read, but it's not all bad. Mike Fratantoni, Senior Vice President and Chief Economist for the Mortgage Bankers Association, recently said, "Mortgage rates are now at their lowest level since September 2022, and about a percentage point below the peak mortgage rate last fall. As we enter the beginning of the spring buying season, lower mortgage rates and more homes on the market will help affordability for first-time homebuyers." Nationally, first-time homebuyers represented 31% of all buyers, up from 28% a month ago. So it would appear that there's some light at the end of the tunnel, especially for first-time buyers.

I don't have much of a legislative update for you at this time. Bills are still being introduced and have an introduction deadline of February 17. At that time, I'll be diving in with our State lobbying team to see what we need to be aware of for both support and opposition. Once that happens, I'll be sure to keep you updated and informed.

Lastly, I am excited to announce a long-time event that SRCAR has been hosting for our members that is open to the public for the first time! On February 23, we will be hosting the City Managers from Canyon Lake, Lake Elsinore, Menifee, Murrieta, Temecula, and

Wildomar to update us on what's happening in each of those cities. It's a phenomenal half-day event that I'm sure you will find value in. I will include the flyer in this report, which has more information and registration information. There is still an opportunity to be a sponsor as well.

I hope I have covered everything that affects you and your business. Please let me know if I left anything out or if you need anything explained further.

As always, I am available if you have any questions about the report. Until next month...

SW Market @ A Glance						
Southwest California	Reporting Period	Current Month	Last Month	Year Ago	Change from Last Month	Change from Year Ago
Existing Home Sales (SFR Detached)	October 2022	685	779	1,101	-12%	-38%
Median Home Price	October 2022	\$560,000	\$573,000	\$538,000	-2%	4%
Unsold Inventory Index (SFR Units)	October 2022	2,076	2,081	1,146	0%	81%
Unsold Inventory Index (Months)	October 2022	4	4	2	0%	100%
Median Time on Market (Days)	October 2022	25	22	9	14%	178%

Your "Average" House, October 2022							
City	Median Sold Price	Average Sold Price	Average Sq. Ft.	Average \$/Sq. Ft.	Bed	Bath	Year Built
Canyon Lake	\$786,000	\$878,993	2,629	\$363.74	4	3	1983
Hemet	\$411,500	\$408,104	1,827	\$225.65	3	2	1988
Lake Elsinore	\$564,950	\$544,932	2,024	\$269.50	4	3	1997
Menifee	\$509,000	\$578,812	2,199	\$273.37	4	3	2003
Murrieta	\$632,000	\$683,139	2,437	\$293.62	4	3	2000
Perris	\$518,000	\$507,737	1,890	\$269.67	4	3	1993
San Jacinto	\$485,990	\$488,951	2,006	\$248.74	4	3	2006
Temecula	\$697,500	\$847,836	2,482	\$350.93	4	3	1998
Wildomar	\$595,000	\$622,964	2,264	\$296.46	4	3	1995
Winchester	\$564,883	\$573,904	2,250	\$261.81	4	3	2013



GROUP OUTINGS

HOST YOUR NEXT GROUP EVENT WITH US!

FRIENDS & FAMILY



COMPANY EVENTS



PICNICS



GROUP PACKAGE INCLUDES

- VISIT FROM THUNDER
- DISCOUNTED TICKETS
- GROUPS SIT TOGETHER
- VIDEOBOARD RECOGNITION



GROUP PRICING

**MINIMUM
25 TICKETS**

**25 - 100 TICKETS
(DIAMOND LEVEL)**

**101+ TICKETS
(DIAMOND LEVEL)**

**FEAST OF DREAMS PICNIC,
LAGUNA GRANDE PICNIC,
OR PARTY DECK**

	TUESDAY WEDNESDAY	THURSDAY	FRIDAY	SATURDAY	SUNDAY
25 - 100 TICKETS (DIAMOND LEVEL)	\$9.50	\$18.50	\$19.50	\$39.00	\$13.50
101+ TICKETS (DIAMOND LEVEL)	\$9.00	\$18.00	\$19.00	\$39.00	\$13.00
FEAST OF DREAMS PICNIC, LAGUNA GRANDE PICNIC, OR PARTY DECK	\$32.00	\$41.00	\$42.00	N/A	\$36.00

**CONTACT US TO LEARN MORE ABOUT PREMIUM SEATING OPTIONS
OR TO BE PART OF PRE GAME FESTIVITIES**



**500 DIAMOND DRIVE
LAKE ELSINORE, CA 92530**

**(951) 245-4487
STORMBASEBALL.COM**





THANK YOU
for your service

YOUR
PICTURE
HERE

JOHN M. SMITH
★★★★★
MARINE CORPS

2023 MILITARY BANNERS NOW AVAILABLE

\$150 per banner
Deadline: 4/27/2023

For more information call
951-674-3124 ext 268 or visit
www.Lake-Elsinore.org
/MilitaryBanner



BUNNY TRUNK HOPI!

CITY OF
LAKE ELSINORE
DREAM EXTREME

APRIL 1, 2023
12 PM TO 3 PM

DOWNTOWN MAIN ST
LAKE ELSINORE, CA

FREE EVENT

KIDS WALK FROM TRUNK
TO TRUNK AND COLLECT
EASTER EGGS AND
CANDY!

PICTURES WITH THE
EASTER BUNNY

FOOD & AMUSEMENTS

FOR MORE INFO EMAIL
MVELIZ@LAKE-ELSINORE.ORG

SPONSORED BY



TWENTY23 PET WALK

A P_{AW}-SITIVELY FUN
MORNING FOR YOU AND
YOUR FURRY FRIEND!

FREE ADMISSION!

**SATURDAY
MAY 6TH**
9 - 11 AM

LEVEE OF THE
DIAMOND STADIUM
SEE DIAMOND DR

1.5 SCENIC WALK | VENDORS | PHOTO OPS |
RAFFLES | ALL PETS MUST BE LEASED

FOR MORE INFORMATION CALL 951-345-9662



CITY OF
LAKE ELSINORE
DREAM EXTREME

2023 KIDS' FISHING DERBY

Date: Saturday, June 3
Time: 7:30 AM - 10:30 AM
Awards: 10:30 AM
Location: Launch Pointe
32040 Riverside Dr.

Participants must be 15 years or
younger. Pre-Registration is required
by May 20, 2023 space is limited.

EVENT PARTNERS






FREE EVENT

TROPHIES:

- 1st Place
- 2nd Place
- 3rd Place

Plus a variety of others prizes

Register: www.lake-elsinore.org/kidsf
Phone: +951-471-1212
Email: recreation@lake-elsinore.org

5 SPECIES QUALIFY TO WIN! Wipers • Bass • Crappies • Catfish • Carp

10TH
ANNUAL

Lake Elsinore

DREAM EXTREME
FISHING
DERBY

PRESENTED BY

LAKE EL SINORE
CASINO

All Vessel Types Welcome!

MAY 19-21, 2023

Tournament 6:00AM-2:00PM

THOUSANDS
IN CASH & PRIZES!

100% BUY-IN CASH PAYOUT

[Based on minimum 50 teams/ 200 team limit]

\$120 Admission

[\$100 Buy-in + \$20 Entry Fee - Per Two Person Team]

EXCLUSIVE OFFER!

\$310 HOTEL
PACKAGE



CHOICE
HOTEL

20930 Malaga Rd.
Lake Elsinore 92530

INCLUDES

- Two person team entry into 10th Annual Fishing Derby
- 2-night stay at EconoLodge

Limited spaces available for lighted boat/trailer parking

LOCATION

LAUNCH POINTE



32040 Riverside Dr. Lake Elsinore, CA 92530

THANK YOU TO
OUR SPONSORS



Bally
SPORTS
WEST



TURNER'S
OUTDOORSMAN

LAKE ELSINORE VALLEY
CHAMBER OF COMMERCE

PROCEEDS HELP BENEFIT A LOCAL NON-PROFIT ORGANIZATION

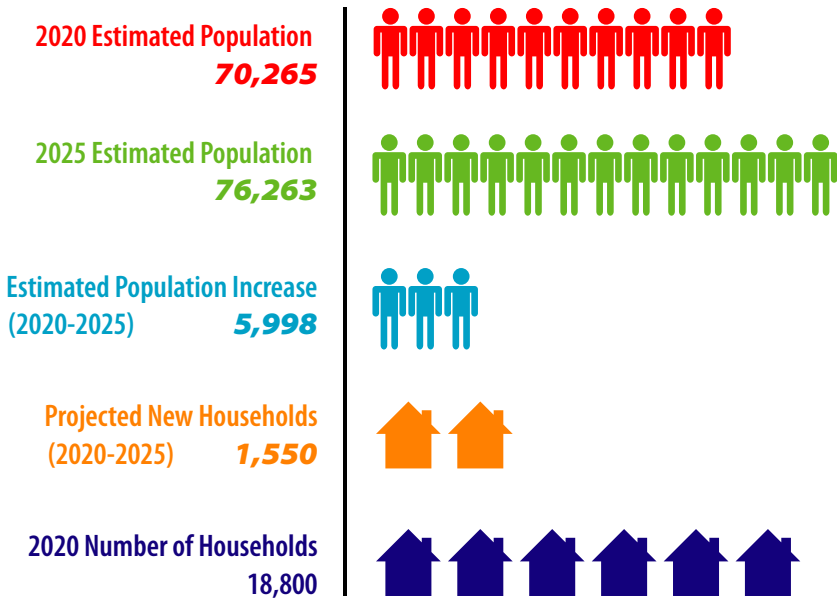
Please Gamble Responsibly 1-800-GAMBLER. Management reserves the right to cancel, modify or alter this game, promotion, or event at its sole discretion and within the guidelines of the BGC. All jackpots and qualified promotions - no purchase necessary; see floor person for details.

REGISTER ONLINE!
LERCASINO.COM

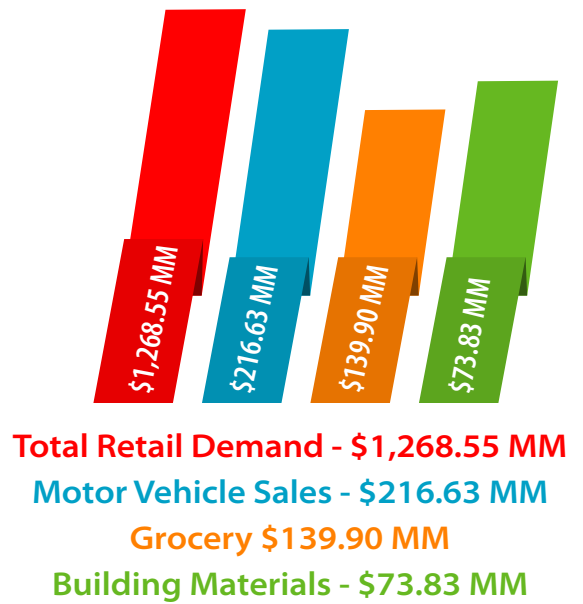
LAKE ELSINORE

ONE OF THE FASTEST GROWING CITIES IN CALIFORNIA

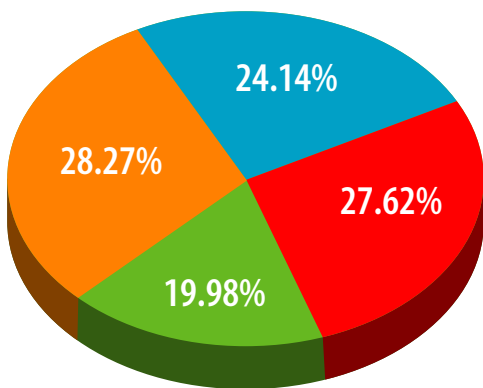
POPULATION INCREASE



ESTIMATED 2020 CONSUMER DEMAND



AGE DISTRIBUTION



Ages 17 & Under

Ages 18-34

Ages 35-54

Ages 55 & Better



HOUSEHOLD INCOME

Average Household Income \$92,504

TRAFFIC COUNTS

	Peak Hour	Average Daily	
I-15 & Railroad Canyon Rd.	9,600	129,000	
I-15 & HWY 74 (Central Ave.)	8,700	117,000	
I-15 and Nichols	8,800	119,000	

MEMBER DIRECTORY

ACCOUNTING/ BOOKKEEPING/TAX SERVICES

Anderson Professional Services
Kristine Anderson (951) 678-2165
andersonprofservices@verizon.net

ARC Financial & Tax Services
Sally Freyre (951) 674-8111
www.TheTaxPartner.com

Jack Ferguson, CPA
Jack Ferguson (951) 471-2700
www.jackfergusoncpa.com

ADVERTISING/ MARKETING

CityByApp LLC
a subsidiary of 3 Cord Marketing LLC
Jerome Mark Mikulich (951) 816-9966
www.CityByApp.com

Elsinore Public Relations
Rachel Mendez (951) 313-1667
www.ElsinorePublicRelations.com

Impact Promotional Products
Karin Cassidy (951) 471-1105
www.impact.com

JD Promotions
Jason Hope (951) 473-2210
www.jdpromos.com

Print and Mail Guy
Mark Gilliam (951) 457-2499
www.printandmailguy.com

TOP Shop - The Only Print Shop
Breanna Sewell (760) 996-8880
www.theonlyprintshop.com

Watermark Associates, LLC
Darcy M. Burke (951) 294-3190
www.watermarkassociates.com

Welcome Wagon
Linda Denmark (951) 808-8600
www.welcomewagon.com

ADVERTISING/MEDIA

• **Enrique Correa Photography**
Enrique Correa (760) 421-3632
www.enriquecorrea.com

AGGREGATE/ASPHALT

Chandler Aggregates, Inc.
Eric Werner (951) 277-3900
www.wernercorp.net

AMBULANCE SERVICES

• **American Medical Response**
David Olguin (951) 782-5200
www.amr.net

ANIMAL SHELTERS/ADOPTIONS

• **Animal Friends of the Valleys**
Beth Soltysiak (951) 674-0618
www.animalfriendsofthevalleys.com

ANTIQUÉ SHOPS

Tom & Jerry's Antiques & Collectibles
Delores Solis (951) 674-9781
tomandjerrys@aol.com

APARTMENTS

R Estates, LLC
Tamiya Robles (267) 536-9296
www.estatesr.com

• **Ridgestone Apartments**
Angie Churchwell (951) 471-8336
www.ridgestone-apts.com

ART CENTERS

STUDIO 395
Rebecca Esquibel (951) 471-4407
www.studio395.org

AUTO BODY AND COLLISION REPAIR

• **Silver Auto Collision**
Jorge Cerda (951) 245-2405
www.silverautocollision.com

Fix Auto Lake Elsinore
Patrick Helferich (951) 471-5530
www.ZBESTPAINT.COM

AUTO GLASS / GLASS

Glass Doctor of SWRC
Laurel Miller (951) 894-5710
www.glassdoctor.com/murrieta

AUTOMOBILE DEALERS

• **Anderson Chevrolet**
Pam Richardson (951) 674-3116
www.andersonchevroletca.com

• **Lake Elsinore Chrysler Dodge Jeep Ram**
Johnny Siepker (951) 291-9700
jsiepker@lakecdjr.com

• **Lake Elsinore Ford**
Kevin Roberts (951) 471-4100
www.lakeelsinoreford.com

Lake Elsinore Honda
Kelly Christie (951) 471-4100
www.lakeelsinorehonda.com

Paradise Chevrolet Cadillac Buick GMC
Craig A McKenzie (951) 764-1339
www.paradiseautos.com

• **Temecula Valley Toyota**
Tom Rudnai (951) 694-0575
www.TVToyota.com

Temecula Valley Lexus
Erin Spires (951) 225-0555
www.tvlexus.com

AUTOMOBILE PARTS/ REPAIR/SERVICE

• **A & M Automotive**
Adam Jadovitz (951) 245-1562
www.aandmautorepair.com

• **Lake Elsinore Tire & Auto**
Roger J. Pollock (951) 674-4510
letaincl@msn.com

• **Team Autoaid**
Julian Gomez (951) 245-1948
www.autoaidonline.com

The Auto Techs Service and Repair
Albert Mendez (951) 259-1291
www.theautotechs.net

AUTOMOBILE TOWING

• **Rivera Towing**
Tony Salguero (951) 941-0001

AWARDS/ENGRAVING

Tulips Trophies & Treasures
Kimberly Ryan (951) 674-6072
www.tulipstrophies.com

BACKFLOW TESTING

• **Hazzard Backflow Inc.**
Rolando Lee Hazzard (951) 445-0809
www.hazzardbackflow@yahoo.com

BANKS/FINANCIAL INSTITUTIONS

• **Bank of America-ATM**
Karen Harrison (800) 622-8731
www.bankofamerica.com

• **Bank of America-Canyon Hills**
Thomas Zamani (951) 244-8076
www.bankofamerica.com

• **Bank of America-Lake Elsinore**
Brittany E. Stuit (951) 674-6911
www.bankofamerica.com

• **Bank of America-North Lake Elsinore**
Joshua Mendez (951) 245-4181
www.bankofamerica.com

• **Navy Federal Credit Union**
David Alvarez (888) 842-6328
www.usafed.org

Pacific Premier Bank
Erik McLeod (951) 461-4534
www.pppi.com

BANQUET FACILITIES

Pins 'N Pockets
Bill Boudreau (951) 245-6250
www.pinspockets.com

The Corporate Room
Candice Nicholas (951) 249-4343
www.thecorporateroom.com

BASEBALL CLUBS

• **Lake Elsinore Storm**
Shaun Brock (951) 245-4487
www.stormbaseball.com

San Diego Padres
Mike Wickham (619) 795-5000
www.sandiegopadres.com

BRANDING

Storyland Studios
Mike Mulligan (951) 674-0998
www.storylandstudios.com

BREWERY

Craft Brewing & Kitchen
Kirk D Medeiros (951) 674-2562
www.craftbrewingcompany.com

BUSINESS MACHINES/ SYSTEMS

• **Image Source**
Mike Holler (951) 296-2150
www.imagesourceusa.com

Innovative Document Solutions
Kevin Hietritter (951) 676-8885
www.idscanon.com

BUSINESS & PROFESSIONAL SERVICES

The Crescent House Lake Elsinore
John Tamez (619) 952-7065
www.thecrescenthouse.com

Shopwholesale.com Inc.
Dennis Woo (862) 279-7121

CAMPGROUNDS/RV PARKS

• **Crane Lakeside Park + R.V. Resort**
Sandy Grant (951) 678-2112
www.cranelakesiderv.com

Launch Pointe
Beau Davis (951) 471-1212
www.launch.pointe.com

• **Lake Park RV Resort & Motel**
Judy Jaynes (951) 674-7911
www.lakeparkrvresort.com

CANNABIS DISPENSARY

Lemonnade
Saif Alchi (951) 297-9300
www.thereallemonnade.com

The Syndicate
(951) 471-5021
socialthesyndicate.com

The Syndicate #2
(951) 583-2400
socialthesyndicate.com

CARPET/UPHOLSTERY CLEANERS

Johnson's Carpet Cleaning
Scott Johnson (951) 674-6685
jccextraction@aol.com

CAR WASHES

Tommy's Express Car Wash
Michael Luders (951) 723-5800
www.tommys-express.com/locations/ca136

CASINOS

• **Lake Elsinore Casino & Econo Lodge**
RJ Watanabe (951) 674-3101
www.lercasino.com

CATERING

BMW Management
Sally Meyers (951) 676-8616

New Life Culinary Creations
Steve Bears (951) 375-1380
www.newlifecatering.com

• **Lake Elsinore Storm Baseball**
Shaun Brock (951) 245-4487
www.stormbaseball.com

CEMETERIES

• **Elsinore Valley Cemetery**
Jeff Kuether (951) 674-2418
evcdistrict@verizon.net

CHAMBERS OF COMMERCE

California Chamber of Commerce
Jennifer Barrera (916) 444-6670
www.calchamber.com

City of Lake Elsinore Visitors Bureau
Kim Joseph Cousins (951) 245-8848
www.visitlakeelsinore.com

Lake Elsinore Valley Chamber of Commerce
Kim Joseph Cousins (951) 245-8848
www.lakeelsinorechamber.com

CHIROPRACTOR**Donohoe Chiropractic, Inc.**

Todd Donohoe (951) 677-6500
www.DonohoeChiropractic.com

CHURCHES• **Elsinore First Assembly of God**

Pastor Fred Rodriguez (951) 678-1757
www.elsinorefirst.com

First Lutheran Church, LCMS

Pastor Kevin L. Kolander
(951) 674-2757
www.firstluth.com

**Shepherd of Life
Lutheran Church**

Rebecca Ajer (951) 678-1561
www.shepherdoflife.org

CITY OPERATIONS**City of Lake Elsinore -
Community Service Department**

Johnathan Skinner (951) 674-3124
www.lake-elsinore.org

• **City of Lake Elsinore -
Fire Department**

Chief Lonny Olson (951) 246-2337
www.lake-elsinore.org

**City of Lake Elsinore -
Lake Patrol**

(951) 245-3338
www.lake-elsinore.org

• **City of Lake Elsinore -
Police Department**

Captain Andrew Elia (951) 245-3300
www.lake-elsinore.org

• **City of Lake Elsinore -
Senior Activities Center**

Priscilla Perez (951) 674-2526
www.lake-elsinore.org

CLEANING SERVICES**Premier Solar Cleaning**

Adam Fuller (951) 465-3117
www.premiersolarcleaning.com

**COMMERCIAL REAL
ESTATE**• **Coldwell Banker Commercial
Sudweeks Group**

Brandon Sudweeks (951) 200-7683
www.cbcsocalgroup.com

Fairway Commercial Partners Inc

Rod K. Oshita (310) 939-7102
www.Fairwaypartners.net

Catalyst Retail

Mark Cooper (913) 915-6538

**SVN | Insight Commercial
Real Estate Advisors**

Janet Kramer (951) 600-8634 ext 702
www.svninsight.com

The Shopoff Group

William Shopoff (949) 417-1396
bshopoff@shopoff.com

WCI - West County Investments

Gary Washburn (951) 318-8542
www.westcountyinvestments.com

• **WestMar Commercial Real Estate**

Mark P. Esbensen (951) 491-6300
www.westmarcre.com

COFFEE & ICE CREAM**Bloom Ice Cream+Coffee**

Kaitlyn Hanson (951) 805-1337
www.bloomicecreamcoffee.com

COMICS / COLLECTIBLES• **Felicity's Collection**

Felicity Gomez (909) 362-0343
www.ebay.com/str/felicityscollection

CONSTRUCTION**Building Industry Association**

Riverside County Chapter
Clint Lorimore (951) 781-7310
www.riversidebia.org

**Edmondson Construction
Company, Inc.**

Chance Edmondson
(951) 674-5589
www.wemovedirt.com

**GBC Concrete and Masonry
Construction, Inc.**

Tom Daniel (951) 245-2355
www.gbconstruction.com

• **Madrid Equipment Rental Inc**

Michael A. Madrid (951) 674-6241
www.madridcorporation.com

Near-Cal Corp.

Carl J. Johnson (951) 245-5400
www.nearcal.com

• **R & R Roofing**

Raul I Jasso (951) 246-0695
www.randrroofing.net

**Saber Geotechnical
Construction Solutions**

Jennifer Ohlsson (800) 922-2488
www.saberfoundations.com

CONSTRUCTION & DEVELOPMENT**Transportation Corridor Agencies**

Jeff Bott (949) 727-4800
www.thetollroads.com

CONSULTING COMPANIES**Hernandez Environmental Services**

Shawn Gatchel-Hernandez
(951) 334-6219
www.hernandezenvironmental.com

**Southwest CA. Economic
Development Coalition**

(951) 694-9800
www.edcswca.com

**Sunbelt Business Sales, Mergers
& Acquisitions**

Myles Ross (714) 200-3761
www.Riverside.SunbeltNetwork.com

**Williams Efurid Digital
Processors LLC**

Ronald Williams (951) 364-3475
WilliamsEfurid@outlook.com

DAIRIES• **DeJong's Dairy**

Herman DeJong (951) 674-2910

DAY SPA**Kin Fit Wellness & Recovery Center**

Chad Burselson (951) 609-8285
www.kinfitwellness.com

DENTISTS• **Elsinore Smiles**

Dr. Aarti Puri (951) 421-0330

• **Dr. Deza's Dental Office**

Rocio D Deza (951) 674-2000
www.drdezasdentaloffice.com

• **Dr. J.T. Baugh**

J.T. Baugh (951) 674-3187

• **Kal Eissa DDS**

Khaled Eissa (951) 674-8707
www.khaledeissadds.com

• **Marketplace Dental Group**

Florence Anaya (951) 245-8664
www.marketplacentalgroup.com

• **Western Dental**

Shona Baillie (951) 643-6094
www.westerndental.com

**DEPARTMENT/
DISCOUNT/WAREHOUSE
STORES****Outlets at Lake Elsinore**

Jennifer Sulpizio (951) 245-0087
www.outletsatlakeelsinore.com

• **Walmart**

(951) 245-5990
www.walmart.com

**DEVELOPERS/
INVESTMENT GROUPS****Civic Partners Inc.**

Tina Alexander (714) 230-8000
www.civicpartners.com

Lake Elsinore Town Center

Linda Nettels (714) 340-7849

• **Mebo Properties Development**

Brian Lam (626) 831-0661
brianvlam@yahoo.com

Northpoint Development

JJ Jenkins (816) 888-7053
www.BeyondTheContract.com

RDP Development Consultants, LLC

(405) 650-5238
www.rdpconsultants.com

DISTRIBUTORS**BuildersMax Inc.**

Guy Selleck (916) 216-9288

ECOLOGICAL CONSULTING**VCS Environmental**

Julie Beeman (949) 489-2700
www.vcsenvironmental.com

**EDUCATION/
TUTORING SERVICES****Diego Hills-****Lake Elsinore Learning Center**

Shellie A. Dansby (951) 319-2763
www.learnfourlife.com

LFW Foundation

Valerie L Geason (951) 245-7073
www.lfwfoundation.org

• **Mt. San Jacinto College**

Kathy Donnell (951) 487-3002
kdonnell@msjc.edu

**Julia Lee Performing Arts
Academy**

Tanya Lee Taylor (951) 356-6786
www.JLPAA.org

ELECTED OFFICIALS**Sssemblyman Bill Essayli**

63rd District
Casey Deaver (951) 369-6644
www.ad63.asmrc.org

CA Senator Kelly Seyarto

32nd Senate District
Joe Fuentes (951) 894-1232
www.ad67.asmrc.org

Supervisor Karen Spiegel

Melania Castellanos (951) 955-1083
www.rivcodistrict2.org

Supervisor Kevin Jeffries

Kevin Jeffries (951) 471-4500
www.rivcodistrict1.org

**EMPLOYEE/EMPLOYER
SERVICES****Thunder Staffing and Business
Development**

Roberta Moon (951) 609-1415
www.thunderstaffing.com

ENERGY BUILDING CONTROLS**Building Automation Technologies Inc.**

Brian Oakes (951) 712-9433

**ENGINEERING
COMPANIES**• **K & A Engineering, Inc**

Joline I Green (951) 279-1800
www.kaengineering.com

• **KWC Engineers**

Kelly Jackson (951) 734-2130
www.kwcengineers.com

ENTERTAINMENT• **Lake Elsinore Storm Baseball**

Shaun Brock (951) 245-4487
www.stormbaseball.com

The Mad Axer

Dane Wunderlich (855) 623-2937
www.themadaxer.com

**EQUIPMENT/PARTY
RENTALS****Elsinore Valley Rentals &
Ready Mix**

Rita Wilsey (951) 674-2427

Gates Sound

Doug Gates (888) 434-3339
www.gatessound.com

FINANCIAL SERVICES**Fix My Credit Now 850**

Tamiya Robles (267) 536-9296
www.fixmycreditnow850.com

**FLOOD/FIRE
RESTORATION****PuroClean Restoration Experts**

Carly Chalker (951) 651-0202
www.puroclean.com/pre-ca

Right Stop Restoration

Jarrett Hale (951) 378-2087
www.rightstoprestoration.com

MEMBER DIRECTORY

FLORISTS

• **Lake Elsinore VIP Florist**
Annette LaRocque (951) 674-6422
www.lakeelsinorevipflorist.com

Tulips Trophies & Treasures
Kimberly Ryan (951) 674-6072
www.tulipstrophies.com

GAS STATIONS

Arco AM/PM
Erwin Randhawa (951) 471-1520
info@arcoguests.com

Arco AM/PM
Ayman Mika (951) 674-7377
ayman_haddad1@yahoo.com

• **Arco Gas / Bocadillo Kitchen**
Bobak Seyedgavadi (951) 471-8370
www.bocadillokitchen.com

Four Corners Arco AM/PM
Erwin Randhawa (951) 245-2866
info@arcoguests.com

Rocket Chevron
Candace Wood (951) 579-4529

GOVERNMENT AGENCIES

• **City of Lake Elsinore**
Jason Simpson (951) 674-3124
www.lake-elsinore.org

Riverside County Treasurer -Tax Collector
Debra Marabella (951) 955-3900
www.countytreasurer.org

Riverside County Transportation Commission
Cheryl Donahue (951) 787-7141
www.RCTC.org

Western Riverside Council of Governments
Dr. Kurt Wilson (951) 955-8311
wrcog.cog.ca.us

GROCERY/FOOD STORES

• **Albertsons 6798**
Paul Kadow (951) 245-4461
Paul.Kadow@albertsons.com

Grocery Outlet of Lake Elsinore
Sarah & Eric Senges (951) 471-6626
www.groceryoutlet.com

• **Stater Brothers #187**
Anthony Charles (951) 244-2014
www.staterbros.com

• **Stater Brothers #189**
Gary Holland (951) 245-5802
www.staterbros.com

• **Stater Brothers #98**
Felix Larez (951) 674-1349
www.staterbros.com

GROUPS & ORGANIZATIONS

California Apartment Association Greater Inland Empire
Victor Cao (949) 474-1411
www.caanet.org

Highpointe Care, LLC
Reuben Stewart (951) 471-5886
www.highpointecare.org

HAIR SALON

Elsinore Barber & Beauty
Tina Breese (951) 674-6320
www.facebook.com/115nMainstLakeElsinore

Sport Clips Haircuts
Amanda Bowers (951) 579-4550
www.sportclips.com/ca646

Vinny's Barber Shop
Vinny Medina (951) 223-8264
www.vinnysbarbershop.com

HEALTH EDUCATION

Gray's Trauma
Dr. Amber D. Gray (909) 419-3311
www.gettraumainformed.com

HEALTH/NUTRITION

Nutrishop
Michael Norcia (951) 674-1550
www.NutrishopUSA.com

HOME BUILDER/DEVELOPER

Corman Leigh
Leah Skor (951) 296-5070
www.cormanleigh.com

HOME IMPROVEMENT CENTERS

Habitat for Humanity Inland Valley Lake Elsinore ReStore
Tammy Marine (951) 471-1188
www.habitat4inlandvalley.org

• **Sherwin Williams**
Rosa Larios (951) 245-1938
www.sherwin-williams.com

HOSPICE CARE

• **Hospice of the Valleys**
Cari Rath (951) 200-7800
www.hovsc.org

HOSPITALS

• **Rady Children's Hospital**
Kathleen Korn (800) 788-9029
www.rchsd.org

• **Southwest Healthcare System**
Raedean Olmo (951) 677-9712
www.ivrmc-rsmc.com

• **Southwest Healthcare Temecula Valley Hospital**
Celena Barton (951) 331-2200
www.temeculavalleyhospital.com

HOTELS/MOTELS/ RESORTS

• **Best Western**
Ajay Patel (951) 674-3131
www.bestwestern.com

• **Holiday Inn Express**
Sachin Trivedi (951) 674-4333
www.hiexpress.com/lakeelsinoreca

Lake Elsinore Econo Lodge
Roxanne Zeller (951) 674-3101
www.lercasino.com

• **Quality Inn**
Pete Patel (951) 674-9694
www.qilakeelsinorehotel.com/home

HVAC

REE Mechanical
Jacquelyn Bishop (951) 296-0984
www.reehvac.net

INSURANCE SERVICES

AFLAC Benefit Solutions
Grace Kim (808) 498-6613
www.reehvac.net

• **Farmers Insurance - Muñoz Insurance Agency**
Michele M Muñoz (951) 471-2029
www.farmersagent.com/mmunoz2

• **Farmers Insurance Wildomar- Andy Morris**
Andrew Morris (951) 678-8111
www.lakeelsinoreinsurance.com

• **GGM Insurance Services**
Guillermo Alfaro (951) 698-2414
www.ggminurance.com

• **R. David Bulen Insurance Agency**
Lisa Mosby (951) 674-0675
lisa@bulen.com

Regional Employee Benefits Council
Brian Wilson (866) 203-4577
www.charterbenefits.com

• **State Farm Insurance - Niehouse Agency**
Paul Niehouse (951) 674-0735
www.statefarm.com

Veronica's Insurance Lake Elsinore
Mauricio Sanchez (714) 308-4319

ICE CREAM/FROZEN DESSERTS

Never Better Frozen Yogurt
Tony Patino (951) 226-7555

JET SKI/BOAT/PADDLE RENTALS

JT's Rentals at Launch Pointe
John Alarcon (951) 777-2866
www.rentmypontoon.net

Temescal Valley Paddle
Miranda Lee (909) 973-1126
www.empirepaddlesports.com

JEWELERS

Ronnie's Jewelers
Jim Turner (951) 674-1255
jtrjewels@coastinet.com

LAKE OPERATIONS

• **City of Lake Elsinore - Lake & Aquatic Resources Department**
Rick DeSantiago (951) 674-5120
www.lake-elsinore.org

LAWN CARE SERVICE/ LANDSCAPE

• **EcoPlanet Landscaping**
Michael Carroll (951) 256-6514
www.ecoplanetlandscaping.com

LEGAL SERVICES

Fabozzi & Miller, APC
Edward J. Miller (951) 296-1775
www.fabozzimillerlaw.com

• **McVicker's Family Law Mediation Center**
T. Elizabeth McVicker (951) 244-8759
www.mcvickersfamilylaw.com

Reid & Hellyer, APC
Donald Hitzeman (951) 695-8700
www.rhlaw.com/temecula-murrieta

LIBRARY

• **Lake Elsinore Library**
Krystal Van Eyk (951) 674-4517

Vick Knight Lakeside Community Library
Ellen Holt (951) 678-7083

MAGAZINES/NEWS MEDIA

Lake Elsinore Magazine of Values
Dee Castro (714) 296-9633
www.LakeElsinoreMagazineOfValues.com

MANAGEMENT COMPANIES

California Apartment Association - Inland Empire Division
Ben Benoit (909) 948-0784
www.caanet.org/about/caa-local/inland-empire/

MANUFACTURERS

BuildersMax Inc.
Guy Selleck (916) 216-9288
www.buildersmax.com

• **Champion Cooling Systems**
Rick Doll (951) 245-9464
www.championcooling.com

• **Pacific Clay Products**
Stuart Hoxsey (951) 674-2131
www.pacificclay.com

The Quikrete Companies
Greg Gibbel (951) 277-3155
www.quikrete.com

MANUFACTURING/MEDICAL

Abbott Vascular
Ken Carlisle (951) 914-2400
www.abbott.com

MEDICAL

Midas House Rehab
Chelsea Belasco (877) 247-3657
www.midasrehab.com

MERCHANT SERVICES

Williams Efurd Digital Processors LLC
RJ Williams (951) 364-3475
WilliamsEfurd@outlook.com

MOBILE HOME PARKS

• **Huntsman Mobile Home Park, LLC**
Fred & Sue West (951) 674-4617

MOLD REMEDIATION

ServPro Lake Elsinore/Perris
(951) 674-4006
www.servprolakeelsinoreperris.com

MORTGAGE/LOAN COMPANIES

Dignified Home Loans
Anastasia Busse (951) 941-9300

Pacific Lending LLC.
Paul Aguilar (951) 609-8080
pac lending.com/paguilar

Villa Home Loans
Anthony Williams (949) 689-9270
villahomeloans.com/anthony-williams

MORTUARIES

• **Evans Brown Mortuary**
John Rowe (951) 674-3141
www.evans-brownmortuary.com

MOVERS

Jon's Movers Inc
Jon Favillo (951) 226-0312
www.jonsmovers.com

NEW HOMES

• **Summerly**
Brian Milich www.mcmillin.com

NON PROFIT ORGANIZATIONS

• **Assistance League of Temecula Valley**
Electra Demos (951) 694-8018
www.temeculavalley.assistanceleague.org

Baseball Resource Group
Mishael Israel (951) 381-0585
www.baseballresourcegroup.org

Canyon Lake Chamber of Commerce
Jeanne O'Dell (951) 244-6124
www.canyonlakechamber.org

Cops for Kids
Leanne Holland (951) 245-3300
www.copsforkidsinc.org

Divine Glory International Foundation, Inc.
Rachael Bassey (818) 934-6700

Dream Center Lake Elsinore
Brett Masters (951) 376-3703
www.dreamcenterle.org

• **EDA/Workforce Development Agency**
Rob Moran (951) 955-3226
www.ricoeda.org

Fight Therapy Foundation
Aubree Childs (310) 425-5958
www.fighttherapy.com

Holt Ministries
Davis Holt (909) 938-2155
www.outreachministryinlakeelsinoreca.com

Jennifer Smart Foundation
Meredith Stewart (951) 245-1017
www.JenniferSmartFoundation.org

• **Kamali'i Foster Family Agency**
Eric Mortensen (951) 674-9400
www.kamalii.org

Kennedie June Von Ryan Foundation
Kimberly Ryan (909) 263-8332
www.kjvrfoundation.com

Lake Elsinore Moose Lodge 1021
John Lavery (951) 674-4477
www.lodge1021.moosepages.org/Contact/

Lake Elsinore Valley Education Foundation
Kevin Pape (951) 609-7525
www.levfef.org

Michelle's Place Cancer Resource Center
Kim Gerrish (951) 699-5455
www.michellesplace.org

National Alliance on Mental Illness/NAMI Temecula Valley
Linda Ditter (951) 672-2089
www.namitv.org

• **Riverside Recovery Resources**
Bernard L Truax (951) 674-5354
www.riversiderecovery.org

The Nature Education Foundation at Santa Rosa Plateau
Virginia Greaves (833) 651-1533
www.srpnef.org

Social Work Action Group (SWAG)
Aaron Petroff (833) 792-4674
www.komenie.org

Susan G. Komen - Inland Empire
Jill Eaton (951) 394-3048
www.komenie.org

The Dresses and Dreams Project
Dawn Schultz (951) 457-1363
www.thedressesanddreamsproject.org

United Way of the Inland Valleys
Kimberly Pennington (951) 600-1671
www.uwiv.org

Veterans Advocacy Associates, Inc.
Kevin Willis (714) 472-4532
www.myvaa.org

Veterans of Foreign Wars
Roger Miller (951) 674-4735

Western Eagle Foundation
Serena Cooper (951) 695-7206
www.westerneaglefoundation.org

NOTARY PUBLIC

Notary Melanie
Melanie Garza (951) 609-4260
www.facebook.com/notary.melanie

PARTY EVENT PLANNERS

Simply Gorgeouz Party Supply & Planning
Marilyn Jones (951) 609-7683
www.SimplyGorgeouz.com

PET CARE

Who Let The Dogs Out? Inc.
Martha Favillo (951) 387-8008
wholetthedogsoutpetsittersca.com

PETROLEUM PRODUCTS

• **Downs Energy**
Ron Skelskey (951) 737-9866
www.downsenergy.com

PHARMACIES

• **Delta Drugs II**
Raz Hovsepian (951) 245-2325
deltadrugsii@yahoo.com

• **Gen RX Pharmacy**
John Rouzi (951) 674-6836
jrrouzi@aol.com

PHOTOGRAPHERS/ VIDEO TAPING SERVICES

Cherished Memories Photography
Mike Norkin (951) 304-4133
www.ourcherishedmemories.com

• **Enrique Correa Photography**
Enrique Correa (760) 421-3632
www.enriquecorrea.com

On The Go Video.biz
Desi Ekstein (951) 523-7828
www.OnTheGoVideo.biz

PHYSICIANS

• **Farid Saadat, MD**
Dr. Farid Saadat (951) 471-5711

• **Total Care Family Medical Center of Lake Elsinore**
Cheryl Roberts (951) 674-8779
totalcareurgentcare@hotmail.com

• **Vista Community Clinic: Lake Elsinore**
Betsy Heightman (951) 252-2720
www.vistacommunityclinic.org

PLUMBERS

• **The Plumbing Guys**
Luis Reyes (909) 559-3652
www.Socialplumbingguys.com

POLICE DEPARTMENT

• **Lake Elsinore Sheriff's Department**
Captain James Rayls (951) 245-3300
www.lake-elsinore.org

POOL SUPPLIES/SERVICE

Aloha Leisure
Katherine Lohmann (951) 674-3320
www.alohaleisurecompany.com

• **Dolphin Pool and Spa Center**
Frank & Jimmy Duran (951) 471-5305
www.dolphinpoolandspa.com

POWER WASHING

D&B Pressure Washing
Devon Moseley-Johnson (909) 522-6644
www.dandbpressurewashing.com

SoCal Pressure Washing & More
Josh Bush (951) 805-3098

PREGNANCY RESOURCES

• **Elsinore Valley Pregnancy Resource Center**
Konrad Aniol (951) 245-8587
evprc@verizon.net

PRINTERS/GRAPHICS/ TYPE SETTING/SALES

• **Ariel Supply, Inc.**
Larry Grote (951) 226-3600
www.arielsupply.com

HitPrint
Jason Devor (949) 600-0776
www.ihitprint.com

Print and Mail Guy
Mark Gilliam (951) 457-2499
www.printandmailguy.com

PROMOTIONAL PRODUCTS

JD Promotions
Jason Hope (951) 473-2210
www.jdpromos.com

PROPERTY MANAGEMENT COMPANIES

• **Access Asset Management, Inc.**
Adam Clarke (866) 830-4401
www.AccessAsset.com

Coldwell Banker ABR Property Management
Wendy Foster- Gault (951) 679-5494
coldwellbanker-propertymanagement.com

Robin Paliwoda-Broker & Property Management
Robin Paliwoda (951) 285-6426
robinprealtor@gmail.com

PUBLIC TRANSPORTATION

• **Riverside Transit Agency**
Jim Kneepkens (951) 565-5000
www.riversidetransit.com

RESIDENTIAL REAL ESTATE

Berkshire Hathaway HomeServices CA Properties
Kirsten Rosanelli (949) 309-1599
www.kirstensellshome.com

BRIX Realty
Jarred Hanson (951) 259-1187

• **Century 21 Preferred**
William L. Bachelor (951) 674-6943

The Inland Gateway AOR
Ligia Martinez (951) 735-5121
www.igrealtors.org

Coby Alaoui - Listing Residential Specialist
Coby Alaoui (951) 291-8418
www.cobysellsrealestate.com

Farnam & Associates Real Estate - Nancy Hunzeker PMN
Nancy Hunzeker (951) 236-9424
NancyHunzeker@gmail.com

• **Keller Williams The Lakes**
(951) 816-6565
www.kwthelakes.com

Lumos Communities LLC
Leonard Lechnitz (951) 505-1502
lechnitz@lumoscommunities.com

• **Oscar Tortola Group**
Lupe Flores (951) 356-7227
www.oscartortolagroup.com

• **Southwest Riverside County Association of Realtors**
Connie Lynch (951) 894-2571
www.srccar.org

Tarbell Realtors
Rebecca Crandell (714) 788-6143
www.RebeccaCrandell.com

RESTAURANTS

Annie's Café
Elias Bitar (951) 245-6106
www.anniescafelakeelsinore.com

Craft Brewing & Kitchen
(951) 674-2562
www.craftbrewingcompany.com

CJ's Sports Grill & Turf Club
Raul Flores (951) 674-3101

Diamond Tap Room
Jason Wozniak (951) 245-4487
www.stormbaseball.com

- **El Comal Restaurant**

Miguel Casillas (951) 579-1759
www.elcomal-restaurant.com

- **El Ranchito Taco Shop**

Raymond Moon (951) 245-1438
www.RanchitoElsinore.com

- **Emilio's Mexican Restaurant and Cantina**

Zane Tanguay (951) 226-7227

- **Felix's BBQ with Soul**

Felix Berry (951) 609-2488
www.felixsbbq.com

- **Golden Corral**

James Galloway (951) 609-2452

- **Guadalajara Restaurant**

Ricardo Solano (951) 674-8294
guadalajara.restaurant@yahoo.com

- **IHOP**

Jose Barajas (951) 674-4522
elhkop@pancakestoday.com

- **Jersey Mike's Subs**

Tanya Ilic (951) 674-5860
www.jerseymikes.com

- **La Unica Cocina Mexicana Y Cantina**

Rose Topete (951) 674-2233
www.launicarestaurant.com

- **Main Street Kitchen & Tap**

Robert Kulwicki (951) 674-6777

- **Michi Tacos On Main**

(951) 285-5554
www.michitacos.com

- **Miguel's Jr. Restaurants**

(951) 371-7234
www.miguelsjr.com

- **My Buddies Pizza**

Sean Richardson (951) 674-6946

- **Panera Bread**

Vincent King (951) 253-8062
www.panerabread.com

- **Popeyes Louisiana Kitchen**

Jen Cason (951) 471-3343

- **Raising Cane's**

Tobias Schreiber (805) 550-2350
www.raisingcanes.com/location/535

- **Sizzler Restaurant / BMW Management**

Sally Myers (951) 676-8616
marketing@bmwmanagement.com

- **Stadium Pizza Main St. LLC**

Sandy Kordick (951) 228-2128
www.stadiumpizza.com

- **The Lookout Roadhouse Restaurant**

Barbara Shea-an (951) 678-9010
www.lookoutroadhouse.com

- **Vincenzo's Olive Tree**

Chris Scholder (951) 674-8941
www.vincenzosolivetree.com

RETAIL STORES

- **Chaotic Beauty, Inc.**

Tina Coates (949) 829-2530

- **Mom & Baby Boutique**

Nioma Gardner (951) 399-0109
www.momandbaby.boutique.com

- **Main Street Candy Bar**

David Ross (951) 457-4008
www.mainstreetcandybar.com

- **Promenade Temecula**

Jeff Kurtz (951) 296-0979
www.promenadetemecula.com

- **Lake Elsinore Storm Baseball**

Shaun Brock (951) 245-4487
www.stormbaseball.com

RETAIL TIRES

- **Master Tires & Wheels**

David Reyes (951) 471-5771

SANITATION

- **Diamond Environmental**

Laura Cervantes (760) 744-7191
www.diamondprovides.com

- **Rightway Portable Toilets, Temporary Power Poles, Storage Containers and Septic Pumping Services**

Sam Harding (951) 674-8608
www.www.rightwayportable.com

SCHOOL DISTRICT/SCHOOLS

- **Lake Elsinore Unified School District**

Douglas Kimberly (951) 253-7000
www.leusd.k12.ca.us

- **Riverside County Superintendent of Schools**

Edwin Gomez, Ed.D. (951) 826-6530
www.rcoe.us

- **Sycamore Academy of Science and Cultural Arts**

Barbara Hale (951) 678-5217
www.sycamoreacademycharter.org

SERVICE CLUBS/ ORGANIZATIONS

- **American Legion Post 200**

Terry Sawyer (951) 678-7777
www.legionpost200.org

- **Elsinore Woman's Club**

Lynda Krisko (951) 674-3445
www.elsinorewomensclub.org

- **Lake Elsinore/Wildomar Elks Lodge #2591**

Michael D. Cain (951) 674-6804

- **Lake Elsinore Historical Society**

(951) 678-1537
www.lakeelsinorehistoricalsociety.org

- **Rotary Club of Lake Elsinore**

Rick Morsch (951) 219-5352
www.lakeelsinorerotary.org

- **Southwest Riverside NAACP Branch 1034**

Mary Venerable (951) 443-4551
www.lakeelsinorenaacp.org

- **Warrior Built Foundation**

Aaron Q. Seibert (951) 805-2734
www.warriorbuilt.org

SCREEN-PRINTING

- **Spinning Ink Print Co. LLC**

Megan Bissell (951) 459-7361
www.spinninginkprintco.com

SIGNS/BANNER/ SCREEN-PRINTING

- **Maximum Sign Co**

Geraldine S. Roberts (951) 816-5154
www.maximumsignco.com

SKY DIVING

- **Skydive Elsinore**

Karl Gullede (951) 245-9939
www.skydiveelsinore.com

STORAGE FACILITIES

- **Power Sports RV & Boat Storage**

Erin Zulich (951) 603-0884

- **Ranch RV & Self Storage - Temescal Valley**

Christy De La Cruz (951) 307-9557
www.ranchselfstorage.com

TELECOMMUNICATIONS

- **Carrier Connections**

Debra Smith (951) 751-1705
www.carrierconnections.com

- **Elite MSP**

Sean Ripley (951) 579-4481
www.elitemsp.com

- **Temecula Valley Communications, Inc.**

Shane Lesovsky (951) 677-4422
www.tvcinc.net

TRANSPORTATION

- **Transportation Corridor Agencies**

Jeff Bott (949) 754-3400
www.thetollroads.com

TRANSPORTATION/LIMO SERVICE

- **Stryder Transportation**

Elaine Bartolome (951) 693-0242
www.gostryder.com

UTILITIES

- **CR&R Solid Waste & Recycling Services**

Alex Braicovich (800) 755-8112
www.crrwasteservices.com

- **Elsinore Valley Municipal Water District (EVMWD)**

Greg Thomas (951) 674-3146
www.evmwd.com

- **Metropolitan Water District**

Patti Arlt (213) 217-6491
www.mwdh2o.com

- **Southern California Edison**

Jeremy Goldman (800) 655-4555
www.sce.com

- **Southern California Gas Company**

Adam Eventov (800) 427-2200
www.socalgas.com

- **Southern California Telephone Company**

Ryan McGuire (951) 693-1880
www.socaltelephone.com

- **Western Municipal Water District**

Rachel McGuire (951) 571-7100
www.wmwd.com

VACATION RENTALS

- **Lake Elsinore Lakehouse**

Wendy Lesovsky (951) 741-2552

VEHICLE REGISTRATION

- **In & Out Vehicle Registration**

Bryan & Donna Graves (951) 245-3939
gotplates1@verizon.net

VETERINARIANS/ VETERINARIAN SUPPORT

- **Lake Elsinore Animal Hospital**

Ed Shin (951) 674-9392
www.lakeelsinoreanimalhospital.com

- **Mountainview Small Animal Hospital**

Dr. Craig Hempel (951) 674-1475

WATERSPORTS

- **Colleen's Swim School**

Colleen Calvert (951) 245-1684
www.ColleenSwim.com

WATER WELL SERVICE

- **Quality Pump Service**

Bruce MacLachlan (951) 830-8453

WELDING

- **California Welding Institute**

Mariana Ludmer (951) 536-3809
www.socalwelding.com

WHOLESALE DISTRIBUTORS

- **Tractor Supply Company**

Juan Hernandez (951) 674-1704
www.TractorSupply.com

YOUTH SERVICES

- **Boys and Girls Club of Southwest County**

Shelly Anguiano Figueroa (951) 245-4499
www.bgcswc.org

- **California Family Life Center - Planet Youth Program**

Mary Jo Ramirez (951) 471-8415
kv-cflc@linkline.com



Health in HARMONY

INLAND VALLEY HOSPITAL is proud to be part of the new **SOUTHWEST HEALTHCARE**

Quality healthcare is all about teamwork, with providers working together to deliver high-quality services. Introducing the newly expanded Southwest Healthcare, a comprehensive network of care with convenient hospital and ambulatory locations here to serve you and your loved ones.

This network includes the newly renamed Inland Valley Hospital, a key provider of care in the region that boasts Southwest Riverside County's only Level II Trauma Center. Our Total Joint Center and Bariatric Weight-Loss Surgery Center of Excellence have been recognized for their care. Let us serve you!

Bring **HARMONY** to your health. Visit southwesthealthcare.com to learn more.

OUR NETWORK

Corona Regional Medical Center
Inland Valley Hospital
Palmdale Regional Medical Center
Rancho Springs Hospital
Temecula Valley Hospital
Temecula Valley Day Surgery*
A Plus Urgent Care Centers**
Murrieta - Kalmia Street | Lake Elsinore
Murrieta - Technology Drive | Menifee Lakes
Riverside Medical Clinic**



*Majority owned by an affiliate. **Managed by an affiliate. Physicians are independent practitioners, who are not employees or agents of these facilities. The facilities shall not be liable for actions or treatments provided by physicians. For language assistance, disability accommodations and the nondiscrimination notice, visit our website. 221202107-1225383 11/22

STRESSED AT WORK? HERE'S WHAT IT MAY DO TO YOUR HEART

Chronic stress can hurt your heart, so here are tips for reducing work-related stress.

It should come as no surprise that being stressed can be hard on your heart. Stress increases inflammation in your body and may contribute to known heart risk factors such as high blood pressure. It can also cause you to make less-than-healthy choices, such as overeating, drinking too much alcohol, smoking, or using drugs. And it may make you less likely to eat healthy foods, exercise, sleep well or maintain a healthy weight. All these effects increase your risk of heart disease.

Although many aspects of your life can be stressful, one area where you may feel you can't escape stress is at work. But over time, work stress can damage your heart, especially if you're a woman. One study published in the Journal of the American Heart Association showed that women experiencing job and social strain had a 21 percent higher risk of developing heart disease.

So, what are you supposed to do if work causes you stress?

One option is to leave your stressful job, but that's not usually the best option for most people. These strategies help you de-stress during the work day so your job doesn't take a toll on your heart health—or your overall mental and physical health:

• Learn to say no.

You may feel like you always have to say yes at work to show your worth, but it's helpful to know your limits and to say no when you're feeling overextended and stressed out. You'll not only feel less stressed, but you'll be more productive.

• Plan ahead.

Planning out your day and staying organized is one thing completely under your control that can help you reduce stress.

• Create a pre- and post-work routine.

Some people arrive at the office already stressed or take work stress home with them. Keep stress to a minimum by creating routines for your commute to and from work that help you relax. Call a friend, listen to a podcast, or sing along to your favorite tunes.

• Breathe.

Meditation and deep breathing are helpful ways to calm the mind and reduce stress. Even if you have only a few minutes, find a quiet place to close your eyes and take a few deep breaths when stress hits. You'll be back on your game in no time.

• Sit less.

Moving more throughout the workday is a great stress reliever and is good for your heart. To combat the harmful effects of sitting too much, use a standing desk with or without a desk treadmill, suggest a walking meeting or start a lunchtime fitness routine with a coworker.

• Fuel up properly.

Going for more than a few hours without food can cause your blood sugar levels to drop, which can make you irritable and stressed. Bring healthy snacks from home that will keep you going strong even when you're short on time.

This message is brought to you by your friends in healthcare at Southwest Healthcare, which operate Inland Valley Hospital in Wildomar and Rancho Springs Hospital in Murrieta. For a free physician referral, call 1-800-879-1020.



IMPORTANT PHONE NUMBERS

Emergency Services

• Emergency	911
• American Medical Response	(951) 782-5200
• Border Patrol	(951) 676-2261
• Fire Department/ Emergency	(800) 472-5697
• Fire Department, Station 10 - Graham Ave.	(951) 674-2161
• Fire Department, Station 11 - Lakeland Village	(951) 678-2161
• Fire Department, Station 51- Ortega Highway	(951) 678-6070
• Fire Station, Station 85 - Grand Ave.	(951) 245-2185
• Fire Station, Station 94 - Railroad Canyon	(951) 246-2293
• Graffiti Hotline	(951) 674-2701
• Inland Valley Regional Medical Center	(951) 677-1111
• Lake Patrol	(951) 245-3338
• Police/ Sheriff, After Hours	(800) 950-2444
• Police/ Sheriff, Business	(951) 245-3300
• Rancho Springs Medical Center	(951) 696-6000
• Southwest Healthcare System	(951) 677-9712
• Total Care Family Medical Center of Lake Elsinore	(951) 674-8779

Hospitals & Health Services

• Fallbrook Hospital	(951) 728-1191
• Family Health Center &WIC	(951) 471-4200
• Health Department Clinic	(951) 358-5000
• Hemet Valley Medical Center	(951) 652-2811
• Immunizations	(951) 246-1215
• Inland Valley Regional Medical Center	(951) 677-1111
• Kaiser Permanente Riverside	(951) 353-2000
• Menifee Valley Medical Center	(951) 679-8888
• Rancho Springs Medical Center	(951) 696-6000
• Riverside County Regional Medical Center	(951) 486-4000
• Riverside Community Hospital	(951) 788-3000
• Social Services/ Medi-Cal	(951) 245-3100
• Vista Community Clinic: Lake Elsinore	(951) 252-2720
• WIC Supplemental Nutrition Program	(951) 455-4942

Local Media

• FROGGY 92.9 KFRG FM (Radio)	(951) 693-2206
• The Press Enterprise (Newspaper)	(951) 684-1200
• Valley News	(760) 723-7319

Family Services

• Adult Abuse	(800) 491-7123
• Animal Control	(951) 674-0618
• Environmental Health Services, 24-Hour Emergency Calls	(951) 461-0284
• Mental Health Dept. Adult/ Child Crisis Services	(951) 765-1550
• Mental Health Dept. Night/ Weekend Crisis Intervention	(951) 358-5245
• Child Abuse/ Domestic Violence	(800) 442-4918
• Child Protective Services	(951) 696-3450
• Coroner/ 24-Hour	(951) 443-2300
• Crisis Center/ 24-Hour Hotline	(951) 686-4357
• Gamblers Anonymous	(866) 239-2911
• Homeless Helpline	(951) 291-0050
• Lifestream	(909) 386-6848
• Poison Information	(800) 876-4766
• Rape Crisis/ 24-Hour Hotline	(951) 686-7273
• We-Tip	(800) 78-CRIME

Utilities

• CR&R Solid Waste & Recycling Services	(800) 755-8112
• Elsinore Valley Municipal Water District (EVMWD)	(951) 674-3146
• Metropolitan Water District	(760) 451-9122
• Southern California Edison	(800) 655-4555
• Southern California Gas Company	(909) 335-7660
• Southern California Telephone Company	(951) 693-1880
• Spectrum	(951) 245-9485
• Western Municipal Water District (WMWD)	(951) 789-5000

Service Organizations

• Animal Friends of the Valleys	(951) 674-0618
• Cops for Kids, Inc.	(951) 245-3300
• Elsinore Valley Arts Network	(951) 245-4478
• Elsinore Woman's Club	(951) 678-8941
• H.O.P.E.	(951) 245-7510
• Lake Elsinore Senior Center	(951) 674-2526
• Lions Club	(951) 639-3352
• Lake Elsinore Rotary Club	(951) 219-5352
• Share Program	(951) 674-2758
• United Way/ Inland Valley	(951) 461-1221

Transportation

• AMTRAK	(800) 872-7245
• Community Transportation System	(800) 800-7821
• Dial-A-Ride	(800) 795-7887
• Greyhound (Perris)	(800) 231-2222
• Metrolink	(800) 371-5465
• Riverside Transit Authority (RTA)	(800) 800-7821
• Rideshare	(800) COMMUTE
• Park and Ride	(800) RIDESHARE
• VAN-Ride	(800) 826-7433

Worship

• Calvary Chapel of Lake Elsinore	(951) 674-5451
• Elsinore Christian Center	(951) 674-0747
• Elsinore First Assembly of God	(951) 678-1757
• First Baptist Church	(951) 678-2514
• First Christian Church	(951) 674-2758
• First Lutheran Church Mo Synod	(951) 674-2757
• First United Methodist Church	(951) 674-6579
• Grace and Truth Worship Ministry	(951) 291-1746
• Independent Church of Elsinore	(951) 674-3632
• Lake Elsinore Baptist Church	(951) 674-9350
• Lake Elsinore Dream Center	(951) 376-3703
• Lake Elsinore Providence Baptist Church	(951) 674-4311
• Lakeview Chapel-Evangelical Methodist	(951) 674-2825
• New Creation Church	(951) 813-5346
• New Hope Baptist Church	(951) 674-8053
• New Song Calvary Chapel	(951) 245-5664
• Shepherd of Life Lutheran	(951) 678-1561
• St. Andrew's Episcopal Church	(951) 674-4087
• St. Frances of Rome Catholic Church	(951) 674-6881
• The P.O.W.E.R. House	(951) 226-0135
• The Lamb's Fellowship	(951) 417-3807

City of Lake Elsinore

- Building and Safety (951) 674-3124 ext. 801
- Business License (951) 674-3124 ext. 302
- City Clerk (951) 674-3124 ext. 269
- City Council (951) 674-3124 ext. 204
- City Manager (951) 674-3124 ext. 204
- Code Enforcement (951) 674-3124 ext. 227
- Community Development (951) 674-3124 ext. 297
- Community Services (951) 674-3124 ext. 265
- Engineering (951) 674-3124 ext. 915
- Graffiti Hotline (951) 674-2701
- Household Hazardous Waste (951) 674-5170
- Human Resources/ Personnel (951) 674-3124 ext. 231
- Lake & Aquatic Resources (951) 674-3124 ext. 265
- Lake Patrol (951) 245-3338
- Parks/ Tree Maintenance/ Streetscapes (951) 674-5170
- Public Information Officer (951) 674-3124 ext. 314
- Public Works/ Pot Holes (951) 674-5170
- Recycling (951) 674-3124 ext. 245
- Senior Center (951) 674-2526
- Special Events/ Filming Permits (951) 674-3124 ext. 292
- Street Hazards (951) 674-5170
- Weed Abatement (951) 674-3124 ext. 998

Government - City

- City Hall (951) 674-3124
- Chamber of Commerce (951) 245-8848
- City Council (951) 674-3124 ext. 204
- Natasha Johnson - Mayor (951) 674-3124 ext. 204
- Robert Magee - Councilman (951) 674-3124 ext. 204
- Steve Manos - Mayor Pro-Tem (951) 674-3124 ext. 204
- Timothy J. Sheridan - Councilman (951) 674-3124 ext. 204
- Brian Tisdale - Councilman (951) 674-3124 ext. 204
- City Manager, Jason Simpson (951) 674-3124 ext. 204
- Chief of Police, Captain James Rayls (951) 245-3300
- Fire Chief, Lonny Olson (951) 246-2337

Government - County

- County of Riverside (951) 955-1000
- County Supervisors
 - Kevin Jeffries, District 1 (951) 471-4500
 - Karen Spiegel, District 2 (951) 955-1020
 - Chuck Washington, District 3 (951) 955-1030
 - V. Manuel Perez, District 4 (951) 955-1040

Government - State

- Governor, Gavin Newsom (916) 445-2841
- Senator, Kelly Seyarto (951) 894-3530
- Assemblyman, Bill Essayli (951) 369-6644

Government - Federal

- US Senator, Dianne Feinstein (951) 914-7300
- US Congressman - District 42, Ken Calvert (951) 277-0042

CHAMBER MAGAZINE AD PRICING

The Lake Elsinore Valley Chamber of Commerce Magazine is a Quartly Publication that includes up-to-date Membership Directory, upcoming Chamber Events, City Map and Ad's for Chamber Members.

Advertising in the Magazine is an easy and effective way to reach 2500 people at a reasonable price!

FULL COLOR AD'S			
BACK COVER	\$1000	1/2 PAGE	\$300
INSIDE FRONT COVER	\$600	1/4 PAGE	\$150
INSIDE BACK COVER	\$600	BUSINESS CARD	\$100
FULL PAGE	\$400		

Call the Chamber Today to Secure Your Ad Space in our Next Magazine.

951.245.8848

Don't have an Ad? No Problem!
The advertising price includes ad design.
Don't Miss Out On This Great Deal!!!

National leaders. Local legends.

#1 in the West for Orthopedics



#1 in SoCal for Neurology
& Neurosurgery



BEST
CHILDREN'S
HOSPITALS

U.S. News

RANKED IN
10 SPECIALTIES
2022-23

#1 in SoCal for Neonatology



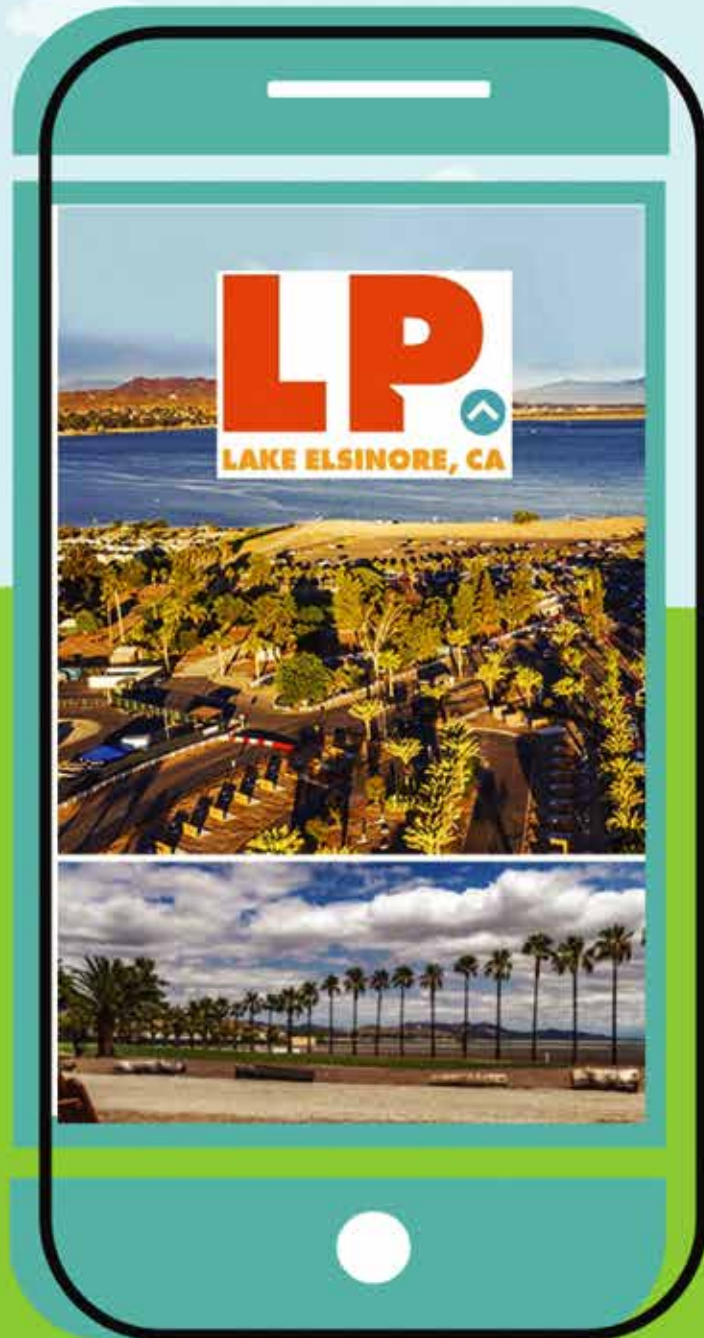
#1 in the West for Cardiology
& Heart Surgery



Rady Children's®

Find out more at www.rchsd.org/Murrieta
or call 800-788-9029

GET THE LAUNCH POINTE CAMPERSAPP



Real-Time Alerts
Activity Reminders
Calendar of Events
Park Information
Local Events

Scan Now



DOWNLOAD CAMPERSAPP
campersapp.com/app

**LAUNCH
POINTE**
LAKE ELSINORE, CA



LAKE ELSINORE DIAMOND STADIUM



LET US HOST YOUR NEXT EVENT!

SPECIALIZING IN:

**CONCERTS
5K/10Ks
AUTOCROSS
RACING
PARKING LOT
RENTALS
GRADUATIONS
HOME SHOWS
CAR SHOWS
CATERINGS
STAGE &
PRODUCTION
RENTAL**

**IN-STADIUM OR AT
YOUR LOCATION!**



CALL 951.245.4487 x206 FOR MORE INFO

ALERT LE

REPORT, TRACK, AND
HELP BEAUTIFY OUR CITY

Download the City's new mobile
app today.
www.lake-elsinore.org
#LakeElsinore #AlertLE



A Smart Phone App is now available for you to use to report and get updates about any concerns or issues you may have directly to the City of Lake Elsinore.

Download in your App Store!
It's FREE!

The Rotary Club of Lake Elsinore

What are the benefits of joining Rotary?

- Become connected to your community
- Work with others in addressing community needs
- Interact with other professionals in your community
- Establish contacts with an international network of professionals
- Develop leadership & public speaking skills
- Involve family in promoting service

Meeting Location/Time
Second Tuesday of the Month
6:30pm at LEUSD Board Room
520 Chaney Street
Lake Elsinore CA 92530

2022-2023 President, Rick Morsch:
rick@morscheng.com • (951) 219-5352
*For Questions Contact: Rick Morsch (951) 219-5352
or Kim Cousins (951) 834-5521*

**Call the Chamber Today to Secure
Your Ad Space in our Next Magazine.**

951.245.8848

Don't have an Ad? No Problem!
The advertising price includes ad design.
Don't Miss Out On This Great Deal!!!

JACK T.FERGUSON

Certified Public Accountant

Services Provided

- **Audit Representation**
Federal & Local Agencies
- **Bookkeeping Services**
Monthly & Quarterly
- **Non-Profit Organizations**
Consultation & Filing
- **Tax Return Preparation**
Individual & Corporate

31569 Canyon Estates Dr., Suite 112
Lake Elsinore, CA 92532

Office: (951) 471-2700
Fax: (951) 471-8100

jferguson@fergusonmay.com

Inland Empire Notary Services



Inland Empire mobile Notary Public services for many legal documents, including, but not limited to, Power of Attorney, Wills, Trusts, and Apostilles, as well as Notary Signing Agent services for all real estate transactions including loan closings on refinances, purchases, sales, reverse mortgages, commercial loans and loan modification.

Melanie Garza
**Notary Public &
Signing Agent**

Call/Text: 951.609.4260
Email: NotaryMelanie@gmail.com



Robin Paliwoda

Real Estate Broker

DRE #00520520

(951) 285-6426

robinprealtor@gmail.com

LEASES- SALES - PURCHASES - PROPERTY MGMT

36330 Hidden Springs Rd. Suite E
Wildomar, CA 92595





RIVERSIDE RECOVERY RESOURCES

Alcohol & Drug Education, Prevention and Treatment

Programs offered:

- DUI Education & Prevention
- Intensive Outpatient (IOP)
- Outpatient (OP)
- Anger Management
- Telehealth

And other Recovery Resources

(We accept most major insurances and have private pay options available.)

Se Habla Español

Office: (951) 674-5354

After Hours: (951) 440-0160

Accredited By:



California Association of DUI Treatment Programs California Department of Health Care Services



Lake Elsinore Office

600 Third Street - Suite C
Lake Elsinore, CA 92530

O: (951) 674-5354

F: (951) 674-5227

Riverside Office

3757 Elizabeth Street
Riverside, CA 92506

O: (951) 684-3744

F: (951) 684-2846

RiversideRecovery.org



PREMIER PARTNERS:



LAKE ELSINORE VALLEY
CHAMBER OF COMMERCE

132 West Graham Avenue • Lake Elsinore, CA 92530

Presorted
Standard
US Postage
PAID
Print and
Mail Guy



PREMIER MEMBERS:



PREMIER ASSOCIATES:



MEDIA ASSOCIATES:



A LEADER IN THE BUSINESS COMMUNITY

LAKE ELSINORE VALLEY
CHAMBER OF COMMERCE

REPRESENTING THE INTEREST OF THE
BUSINESS COMMUNITY SINCE 1949.

OUR FACEBOOK SOCIAL MEDIA HAS REACHED OVER
26,623 AND OVER 7,500 PEOPLE FOLLOWING.

A CALIFORNIA CHAMBER OF COMMERCE PRESIDENT'S
CIRCLE AWARD WINNER FOR 13 YEARS.

(951) 245-8848 • WWW.LAKEELSINORECHAMBER.COM
132 WEST GRAHAM AVENUE • LAKE ELSINORE, CA 92530